



**2013**

**Construction Industry Planner**  
**Queensland Edition**

	JANUARY	FEBRUARY	MARCH	APRIL	MAY	JUNE
M				1		
T	1			2		
W	2			3	1	
T	3			4	2	
F	4	1	1	5	3	
S	5	2	2	6	4	1
S	6	3	3	7	5	2
M	7	4	4	8	6	3
T	8	5	5	9	7	4
W	9	6	6	10	8	5
T	10	7	7	11	9	6
F	11	8	8	12	10	7
S	12	9	9	13	11	8
S	13	10	10	14	12	9
M	14	11	11	15	13	10
T	15	12	12	16	14	11
W	16	13	13	17	15	12
T	17	14	14	18	16	13
F	18	15	15	19	17	14
S	19	16	16	20	18	15
S	20	17	17	21	19	16
M	21	18	18	22	20	17
T	22	19	19	23	21	18
W	23	20	20	24	22	19
T	24	21	21	25	23	20
F	25	22	22	26	24	21
S	26	23	23	27	25	22
S	27	24	24	28	26	23
M	28	25	25	29	27	24
T	29	26	26	30	28	25
W	30	27	27		29	26
T	31	28	28		30	27
F			29		31	28
S			30			29
S			31			30
M						
T						

## 2014 Day Planner

	JANUARY	FEBRUARY	MARCH	APRIL	MAY	JUNE
m	6 13 20 27	3 10 17 24	31 3 10 17 24	7 14 21 28	5 12 19 26	30 2 9 16 23
t	7 14 21 28	4 11 18 25	4 11 18 25	8 15 22 29	6 13 20 27	3 10 17 24
w	1 8 15 22 29	5 12 19 26	5 12 19 26	2 9 16 23 30	7 14 21 28	4 11 18 25
t	2 9 16 23 30	6 13 20 27	6 13 20 27	3 10 17 24	1 8 15 22 29	5 12 19 26
f	3 10 17 24 31	7 14 21 28	7 14 21 28	4 11 18 25	2 9 16 23 30	6 13 20 27
s	4 11 18 25	1 8 15 22	1 8 15 22 29	5 12 19 26	3 10 17 24 31	7 14 21 28
s	5 12 19 26	2 9 16 23	2 9 16 23 30	6 13 20 27	4 11 18 25	1 8 15 22 29
M						
T						

	JULY	AUGUST	SEPTEMBER	OCTOBER	NOVEMBER	DECEMBER
m	7 14 21 28	4 11 18 25	1 8 15 22 29	6 13 20 27	3 10 17 24	1 8 15 22 29
t	1 8 15 22 29	5 12 19 26	2 9 16 23 30	7 14 21 28	4 11 18 25	2 9 16 23 30
w	2 9 16 23 30	6 13 20 27	3 10 17 24	1 8 15 22 29	5 12 19 26	3 10 17 24 31
t	3 10 17 24 31	7 14 21 28	4 11 18 25	2 9 16 23 30	6 13 20 27	4 11 18 25
f	4 11 18 25	1 8 15 22 29	5 12 19 26	3 10 17 24 31	7 14 21 28	5 12 19 26
s	5 12 19 26	2 9 16 23 30	6 13 20 27	4 11 18 25	1 8 15 22 29	6 13 20 27
s	6 13 20 27	3 10 17 24 31	7 14 21 28	5 12 19 26 27	2 9 16 23 30	7 14 21 28

Public Holiday - QLD

Rostered Day Off

School Holidays - QLD

JULY		AUGUST		SEPTEMBER		OCTOBER		NOVEMBER		DECEMBER	
1											M
2							1				T
3							2				W
4	1						3				T
5	2						4	1			F
6	3						5	2			S
7	4			1			6	3		1	S
8	5			2			7	4		2	M
9	6			3			8	5		3	T
10	7			4			9	6		4	W
11	8			5			10	7		5	T
12	9			6			11	8		6	F
13	10			7			12	9		7	S
14	11			8			13	10		8	S
15	12			9			14	11		9	M
16	13			10			15	12		10	T
17	14			11			16	13		11	W
18	15			12			17	14		12	T
19	16			13			18	15		13	F
20	17			14			19	16		14	S
21	18			15			20	17		15	S
22	19			16			21	18		16	M
23	20			17			22	19		17	T
24	21			18			23	20		18	W
25	22			19			24	21		19	T
26	23			20			25	22		20	F
27	24			21			26	23		21	S
28	25			22			27	24		22	S
29	26			23			28	25		23	M
30	27			24			29	26		24	T
31	28			25			30	27		25	W
	29			26			31	28		26	T
	30			27				29		27	F
	31			28				30		28	S
				29						29	S
				30						30	M
										31	T

## 2015 Day Planner

JANUARY	FEBRUARY	MARCH	APRIL	MAY	JUNE
5 12 19 26	2 9 16 23	30 2 9 16 23	6 13 20 27	4 11 18 25	1 8 15 22 29
6 13 20 27	3 10 17 24	31 3 10 17 24	7 14 21 28	5 12 19 26	2 9 16 23 30
7 14 21 28	4 11 18 25	4 11 18 25	1 8 15 22 29	6 13 20 27	3 10 17 24
8 15 22 29	5 12 19 26	5 12 19 26	2 9 16 23 30	7 14 21 28	4 11 18 25
9 16 23 30	6 13 20 27	6 13 20 27	3 10 17 24	1 8 15 22 29	5 12 19 26
1 10 17 24 31	7 14 21 28	7 14 21 28	4 11 18 25	2 9 16 23 30	6 13 20 27
2 11 18 25	8 15 22	8 15 22 29	5 12 19 26	3 10 17 24 31	7 14 21 28

JULY	AUGUST	SEPTEMBER	OCTOBER	NOVEMBER	DECEMBER
6 13 20 27	31 3 10 17 24	7 14 21 28	5 12 19 26	30 2 9 16 23	7 14 21 28
7 14 21 28	4 11 18 25	1 8 15 22 29	6 13 20 27	3 10 17 24	1 8 15 22 29
8 15 22 29	5 12 19 26	2 9 16 23 30	7 14 21 28	4 11 18 25	2 9 16 23 30
9 16 23 30	6 13 20 27	3 10 17 24	1 15 22 29	5 12 19 26	3 10 17 24 31
1 10 17 24 31	7 14 21 28	4 11 18 25	2 16 23 30	6 13 20 27	4 11 18 25
2 11 18 25	8 15 22 29	5 12 19 26	3 17 24 31	7 14 21 28	5 12 19 26
3 12 19 26	9 16 23 30	6 13 20 27	4 18 25	1 8 15 22 29	6 13 20 27

Public Holiday - QLD

Dates correct at time of printing.

## TOWNSVILLE PORT INNER HARBOUR EXPANSION



**CLIENT:** PORT OF TOWNSVILLE / PAN TROIKA PTY LTD

**Features:** \$118m redevelopment of Berths 8 and 10 at North Queensland's premier multi-cargo and cruise liner port, incorporating new wharf, passenger terminal, cargo wharf, roads and services and structural upgrades.

**RCP Services:** RCP is the appointed Client Project Manager providing advisory services on project programming, project management and delivery. Completion is scheduled for 2013.

## AIRPORTLINKM7 'READINESS TO OPERATE' PROGRAMME



**CLIENT:** BRISCONNECTIONS

**Features:** AirportlinkM7 is a \$4.8b, 6.7km, electronic 'free-flow' tollroad connecting the CLEM7 Tunnel and Inner City Bypass to arterial roads leading to the Brisbane Airport.

**RCP Services:** Engaged to initially review the 'Readiness to Operate' Programme, RCP also provided a review of the programme on a fortnightly status update and monthly reporting basis, attending on site and preparing Status Reports for Executive Management Meetings.

## CAVILL MALL REDEVELOPMENT CONSTRUCTION



**CLIENT:** CURLEY BUILDERS

**Features:** \$6m redevelopment of the high profile pedestrian tourist area in the centre of Surfers Paradise to integrate with the Gold Coast City Council's foreshore development project.

**RCP Services:** Following preparation of a development programme for the Council on this project, RCP was engaged by Curley Builders to produce a suggested staging proposal and construction programme in addition to attending monthly on-site visits to provide programme status updates.

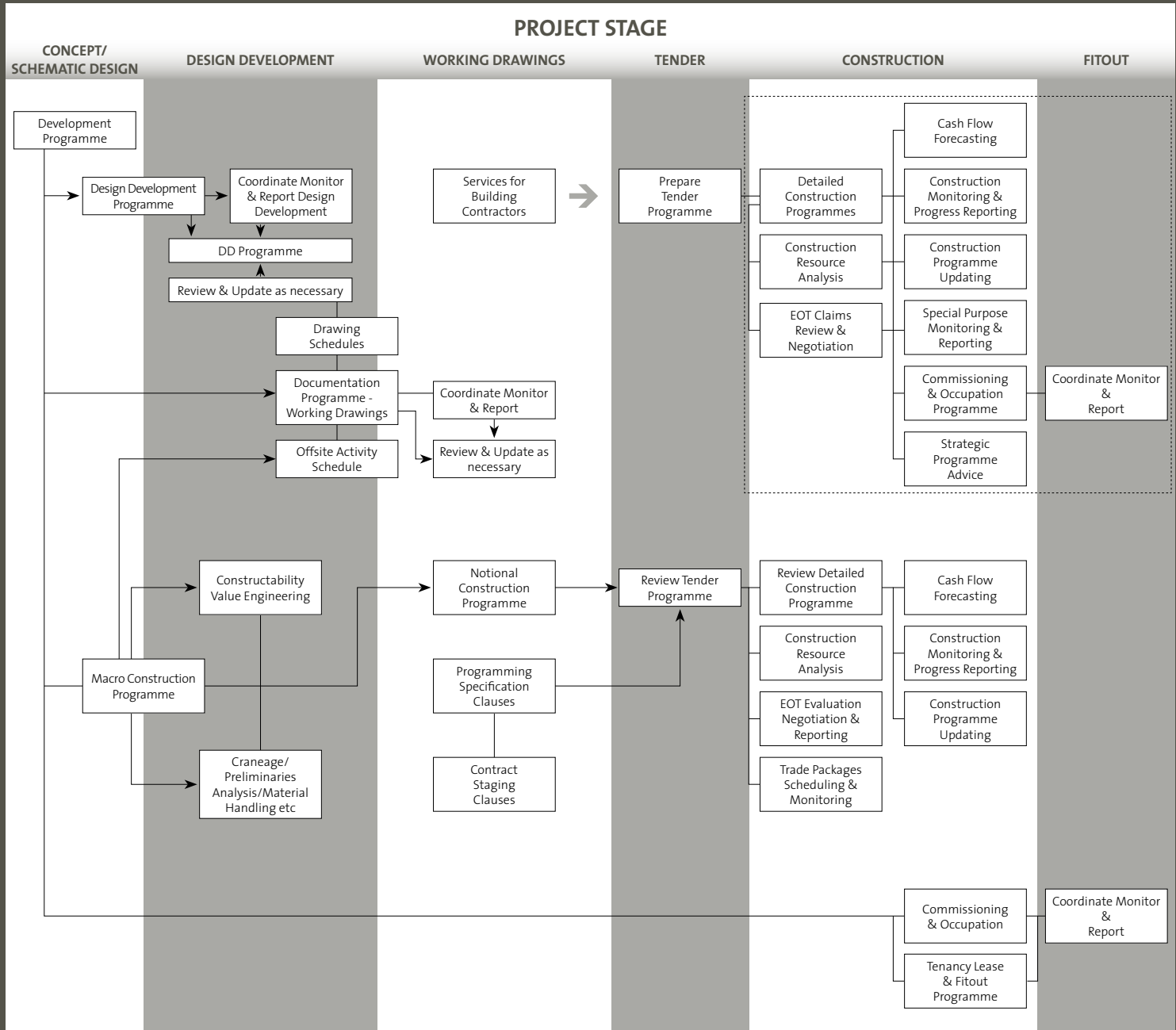
## SOUTH AUSTRALIAN HEALTH AND MEDICAL RESEARCH INSTITUTE (SAHMRI)



**CLIENT:** DEPARTMENT OF PLANNING, TRANSPORT AND INFRASTRUCTURE (DPTI) IN PARTNERSHIP WITH SAHMRI

**Features:** This \$200m facility will create a 25,000m<sup>2</sup> world class headquarters of medical research and clinical application capable of housing up to 695 researchers.

**RCP Services:** To support the DPTI's project risk management role, RCP has been engaged to provide expert programming services, reviewing the managing contractor's construction programmes and providing advice on the critical path, contingency and implications of potential constraints. RCP also provides monthly construction status reports.



RCP's experienced Programmers provide accurate, objective and independent information vital to the sound management and direction of all phases of your project.

From concept design through to project completion, the ability to effectively manage project time and related costs decreases exponentially throughout the project. Not simply limited to the construction phase, RCP's Programming services provide an integrated project development process which facilitates effective control of the total project ensuring optimum project time performance.

To anticipate potential oversights or actions that may impact adversely on the project, we look at both short and long term milestones. Throughout the project, we communicate current programming information to all personnel so they can focus their efforts and resources on the critical activities.

Our Project Programming services are usually provided as an integral part of our Project Management service but they are also available as a stand alone service.

RCP not only help you plan your work, they also help you work your plan.

- Development Programming
- Construction Programming
- Cashflow Projections
- Civil Engineering Programming
- Design Programming
- Programme Monitoring & Reporting
- Claims Assessment & Management
- Leasing Programmes
- Authority Approval Programme
- Resource Scheduling
- Contract Advice
- Event Programming

RCP is one of the few project management consultancies that maintain a dedicated, specialist project programming team as an in-house offering.

Our programming services facilitate an integrated project development and delivery which brings about effective control and optimum project time performance.

Our experienced programmers provide accurate, objective and independent information vital to the sound management and direction of all phases of the project.

RCP provides programming services through each of the feasibility, design, pre-contract and construction phases of a project.

## OUR SERVICES:

- Include independent project monitoring and co-ordination to assist project and development managers to efficiently coordinate design, documentation and procurement as well as on-site construction and commissioning.
- Communicate program information to the project team and key stakeholders so they can focus effort and resources on critical activities.
- Alert the project team to potential problems, creating new target dates and strategies to bring the project back on schedule.

## OUR TEAM:

- Use a wide range of project management and information management software as well as hybrid database and spreadsheet applications.
- Help to identify problems early, allowing strategies to be developed to mitigate the effects of delays.
- Liaise with the project team to produce alternative design solutions, resourcing strategies or rescheduling options.
- Can assist in the co-ordination of suppliers, shipping and customs authorities to support the timely delivery of materials, plant and equipment to site.
- Have provided project programming services for projects ranging in value from \$50,000 to over \$600 million in a myriad of sectors including public facilities, hotels, convention centres, tourism, residential, commercial, retail, new build and refurbishment projects, industrial, defence, infrastructure, health, mining, recreational, casinos and telecommunications.

### Neal Taylor

Director, Programming Division

E [ntaylor@rcp.net.au](mailto:ntaylor@rcp.net.au)

M 0407 778 361

P 07 3003 4100

## RCP Programming Division

- 30 years of project scheduling experience with a proven track record of delivering major projects for a myriad of local, national and global organisations - on time and on budget.
- RCP's programming team are skilled in the use of numerous scheduling tools including Primavera P6, P3 and Suretrak, Microsoft Project and Asta Powerproject.
- Experienced in BIM 4D Planning utilising Navisworks Simulate.
- Experienced practitioners of "Earned Value and Project Controls".
- Expert advisors for delay claim analysis.
- RCP's programmers have vast experience across all construction and infrastructure industry sectors - commercial, retail, residential, hotels & leisure, public buildings, education, health, road, rail, water, energy, aviation.
- RCP's programmers are involved on current projects with a total estimated construction value of approximately \$1.5 billion.
- We have been recognised five times with Project Management Excellence Awards from the Australian Institute of Building.
- RCP carry the highest Qld State Government PQC rating (4) and Quality Assurance (third party certified).

Project Management • Development Management • Project Programming • Delay Claim Advisory

### AUSTRALIA

**Website** [www.rcp.net.au](http://www.rcp.net.au)  
**Brisbane** Tel: +61 7 3003 4100  
Fax: +61 7 3012 9400  
**Townsville** Tel: +61 7 4721 0833  
Fax: +61 7 4721 1038  
**Email** [rcp@rcp.net.au](mailto:rcp@rcp.net.au)  
**Melbourne** Tel: +61 3 9038 1772  
Fax: +61 3 9038 1768  
**Email** [rcpvic@rcp.net.au](mailto:rcpvic@rcp.net.au)

### NEW ZEALAND

**Website** [www.rcp.co.nz](http://www.rcp.co.nz)  
**Auckland** Tel: +64 9 379 9250  
Fax: +64 9 379 9129  
**Tauranga** Tel: +64 7 579 9250  
Fax: +64 7 579 9253  
**Christchurch** Tel: +64 3 379 4701  
Fax: +64 3 379 4702  
**Wellington** Tel: +64 4 473 1850  
Fax: +64 4 473 0154  
**Email** [rcp@rcp.co.nz](mailto:rcp@rcp.co.nz)